

# Aseptic sampling valve PV Sampling system PS

### Functionality

These valves are used for sampling in product lines or containers. When not actuated, the internal assembly seals the valve seat in a leakage-free manner and thus enables the seal tightness of the product line / container. Using the axial valve stroke, monitored sampling is permitted as required.

### Use

- Valves are designed for use in the food, dairy and beverage, pharmaceutical, chemical, and cosmetics industries
- Valve type PV is used for aseptic and / or hygienic sampling
- Operating temperatures up to +150°C (+302°F), optionally increased up to +240°C (+464°F)
- CIP (Cleaning-In-Place) and SIP (Sterilizing-In-Place) capable, up to +160°C (+320°F)
- The modular valve design allows integration into diverse process applications

### Design Characteristics

- Modular design, consisting of three main components: housing, internal assembly, and actuator (components connected via a two-piece clamp)
- Low-maintenance design
- All product contact surfaces are made of AISI 316L stainless steel (materials certificate available upon request) with a surface finish of 0.8 µm Ra that meets all common hygienic standards
- Can be designed as a welded (into pipelines and containers), screwed (onto containers), or clampable fitting
- Available in a hygienic and aseptic (metal/PTFE folding bellow) design

- The standard version of the pipe connections are designed with welded ends according to DIN 11866. Also available with an GEA Aseptomag screw connection, Keofitt, or clamp connection as desired by the customer
- The valve can be operated manually, pneumatically, or by a combination of the two
- Electric feedback via M8 initiator

### Housing

The housing is available as a weld-on, screwed-on, or clampable component. In addition, all housing parts can be provided with two or three port connections (the third connection is primarily used to supply steam).

### Internal Assembly

The internal assembly is available as a hygienic variant without the folding bellow and as an aseptic version with either a metal or PTFE folding bellow. In the case of the PTFE folding bellow, the valve seat seal is fully integrated. The other two versions are designed with a shrunk-on PTFE seals by default. Additional sealing materials or internal assemblies with screwed-on valve seat seals are also available upon customer request.

### Actuator

When a hand lever is used for actuation, the valve stroke is initiated via a tipping movement. Like the pneumatic actuator and spring-closing / air-opening manual actuator with a pneumatic venting cylinder, this type of actuator is also part of the standard product range.

### Dimensions of the pipe connections

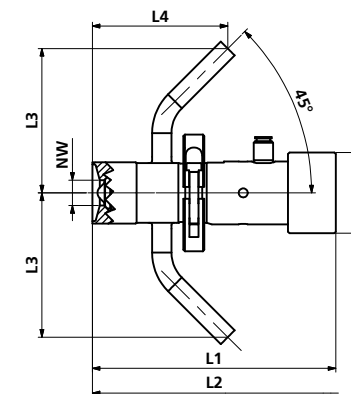
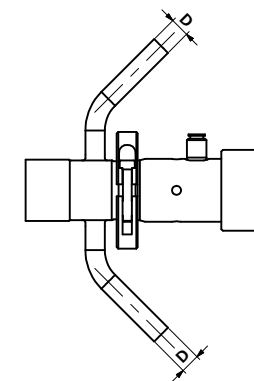
(acc. to DIN 11866)

DN	10
DIN 11866 A (DIN 11850)	
Dim. Ø x s (mm)	13x1.5
DIN 11866 B (ISO)	
Dim. Ø x s (mm)	17.2x1.6
	½"
DIN 11866 C (OD)	
Dim. Ø x s (mm)	12.7x1.65
Dim. Ø x s (inch)	0.5x0.065

### Dim. of the aseptic sampling valve PV

DN	08	15
D1	54	54
L1	145	165
L2	190	240
L3	96.6	96.6
L4	72.6	90.6

Other nominal diameters and housing versions available upon request



Overview of the sampling valve range



Aseptic sampling valve with metal folding bellow



Aseptic sampling valve with PTFE-bellow



Single PS with welded sampling valve



PS with integrated steam barrier



### Sampling system PS

In addition to individual sampling valves, GEA Aseptomag also offers pre-assembled complete solutions for sampling. Sampling systems can be equipped for all kinds of applications and thus vary in degree of detail. Due to the modular design of the systems, it is possible to adapt these to customer requirements without great effort or expense.