

Hygienic steam inlet valve DE

Functionality

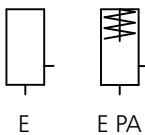
Hygienic steam inlet valves are used for the monitored supply of steam in containers or tanks. The valve seat is closed by a pressure spring and opens as soon as the steam pressure exceeds the spring force. The optional pneumatic actuator is used to increase the closing force and to open the valve without the application of steam.

Use

- Valves are designed for use in the food, dairy and beverage, pharmaceutical, chemical, and cosmetics industries
- Used as a safe, reliable, and robust flow control device for steam in hygienic and aseptic processing plants
- Operating temperatures up to +160°C (+320°F)
- SIP (Sterilizing-In-Place) capable, up to +160°C (+320°F)
- Designed for attachment to tanks and other containers

Design Characteristics

- Modular design, consisting of the four main components: welded flange, housing, internal assembly, and actuator
- The actuator and internal assembly are connected to the housing with a three-piece clamp
- Low-maintenance, service-friendly, and hygienic design
- All product contact surfaces are made of AISI 316L stainless steel (materials certificate available upon request) with a surface finish of 0.8 µm Ra that meets all common hygienic standards
- Complete actuator made of stainless steel
- Customer-specific applications available upon request



Welded flange

For both the mechanical and pneumatic versions, the welded flange is identical and fixed to the valve using four screws.

Internal Assembly

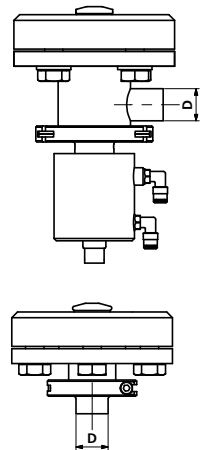
The contact force of the valve seat seal is adjusted using an adjusting nut in the case of valve type DE. In the case of valve type DE PA, adjustment takes place using compressed air in the actuator. All internal assemblies are equipped with a Tefasep® seal by default.

Actuator

Steam inlet valves DE do not have an actuator. Valve type DE PA, on the other hand, is equipped with an air-closing / air-opening pneumatic actuator (LL).

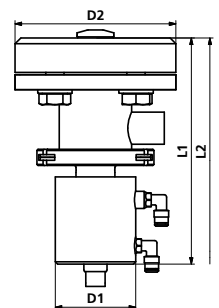
Dimensions of the pipe

connections (acc. to DIN 11866)		
DN	25	40
DIN 11866 A (DIN 11850)		
Dim. Ø x s (mm)	29x1.5	41x1.5
DIN 11866 B (ISO)		
Dim. Ø x s (mm)	33.7x2	48.3x2
	1"	1½"
DIN 11866 C (OD)		
Dim. Ø x s (mm)	25.4x1.65	38.1x1.65
Dim. Ø x s (inch)	1.0x0.065	1.5x0.065



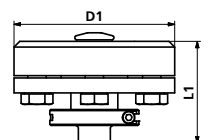
Dimensions of the steam inlet valve DE PA

DN	25	40
D1	70	70
D2	140	165
L1	197	209
L2	310	335



Dimensions of the steam inlet valve DE

DN	25
D1	140
L1	88.5



Steam inlet valve with pneumatic actuator



Steam inlet valve without pneumatic actuator

